

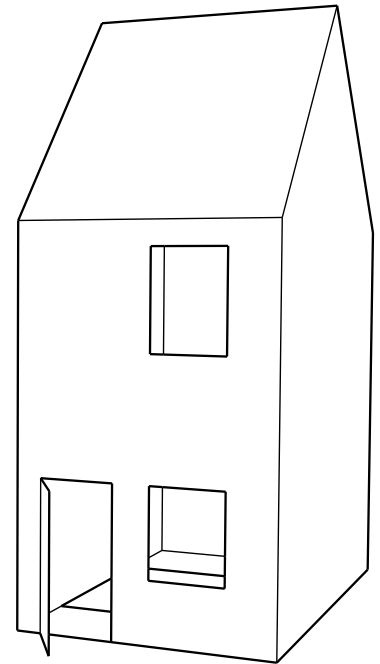


WINTERCROFT

#14

MATERIALS REQUIRED

- Access to an A4 printer
- Thin corrugated card
- Blu Tack or something similar to temporarily fasten paper to card
- Scissors
- A fast-setting adhesive for joining the tabs and assembling the building. You can use either a high quality double-sided tape, or a fast-drying non-toxic glue. A glue gun works well. We recommend using a good quality, high performance double-sided tape as it is easy to handle and has no curing time. Please make sure that whatever glue you use is non-toxic and will not produce harmful fumes



PREPARATION

1. After printing the templates on paper, trim them roughly to the approximate size. They don't have to be neat. Trimming off the excess paper makes it easier to arrange the templates on the card.
2. As you will be using reclaimed card, unfold your boxes to have flat sheets to work with. When selecting your box keep in mind that the side that you draw the templates on will be the interior of the building. So if your card has a printed and clean side, mark out your house on the printed side.
3. Carefully tack the templates to the card so you can remove them later. Blu Tack works fine for this.
4. Cutting out the components can be done using a pair of scissors. Cut around the outside of each part, making sure to only cut along the solid outlines.
5. The fold lines on the templates are marked as either a dashed line representing a valley fold or dashes with dots to represent a mountain fold (see diagram on page 2). Remember, this is with the templates on the inside of the building.
6. Fold lines will need to be scored before they can be creased. This can be done in several ways with either a blunt tool or knife, depending on the tools available. Score all the folds marked on templates.



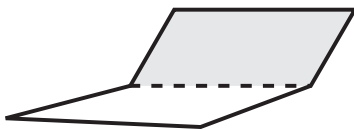
WINTERCROFT

#14

ASSEMBLY

Having cut out and scored your components, find two edges with corresponding numbers. For example, TAB 16 joins to EDGE 16. THE NUMBERS ARE NOT TO BE COMPLETED SEQUENTIALLY.

In each pair of numbered edges, one part will have a glueing tab, and one will not. The glueing tab will always go on the inside of the building. Test fit the part before you apply glue or tape to the tab. Once you are happy with how the parts fit together, lift the paper template and apply glue/tape to the outer surface of the card tab then bring the two edges together, remembering that the tab goes inside the building. Apply pressure to the join until the adhesive has set enough to hold on its own. Glue one tab at a time, test-fitting each part before applying the glue. You can remove the paper templates as you go but keep them close by so you can refer to them if needed. Continue matching the corresponding numbers to complete the building.



Dashed line represents a valley fold.



Dashed line with dots represents a mountain fold.

PLEASE NOTE

We've created this fun craft project to help people explore creativity through papercraft. It's here in particular to support parents, teachers and those looking after young people. So, if you know somebody who might enjoy it, please direct them to our website (wintercroft.com), where they can download a copy for free. However, I ask you not to share or distribute the template yourself, as doing so infringes on our copyright and causes confusion about what can and cannot be done with our work.

As usual, this design is protected by copyrighted and is intended for personal use only. Selling items made from our templates is prohibited.

THESE MODELS ARE A PERSONAL CRAFT PROJECT. PLEASE DO NOT USE THEM FOR PROFIT.

